

# Epitaphs



Publication of the Berks County Association for Graveyard Preservation-Vol. 4 February 1998

## SITE LOCATIONS - MATTER OF PUBLIC RECORD

### A MILESTONE FOR GRAVEYARD PRESERVATION AND PERPETUITY

Monumental breakthrough gives credibility to our efforts and organization and opens many doors for networking with others to accomplish our goals. The mission statement of the Berks County Association for Graveyard Preservation is to preserve and maintain historic Berks County graveyards. A historic graveyard, as defined by the Commonwealth of Pennsylvania, is one that has a burial at least one hundred years old and has not had a burial in the past fifty years, nor are more intended. When governing bodies were unaware of graveyard sites prior to land development, we ran a risk of desecration of this evidence from our early history. Most historic graveyards here in Berks date back to colonial times. Since state laws already on the books give us the support to protect these sites and now the Berks County Planning Commission joins us in pinpointing, notifying and distributing these site locations, we can clearly have in place the nucleus for a most effective and all-inclusive preservation effort. Our board members realized we had found the perfect vehicle to develop and promote an effective preservation policy. To have the location of these historic grave sites on public record by the Berks County Planning Commission and to have all sites flagged on deeds in the recorder's office is a monumental accomplishment.

#### Pilot Program

We are a pilot program and share information and procedures with other counties. This combined effort of the various County Offices and the Berks County Association for Graveyard Preservation is a great example of Berks County's leadership and historic concern. We can build upon this accomplishment. Berks County's Comprehensive Plan is in the developmental phase and inclusion for us in this development is highly desirable.

If related business and professional groups will help us plan we can make this success story even more effective. A release similar to this is planned for the newsletter of the Berks County Bar Association and the Reading/Berks Realtors Association. We will also try to communicate effectively with surveyors and those involved in title searching. Working and planning together we can truly

develop effective procedures and guidelines.

#### Disclosure Essential

Having the location of sites of county historic graveyards on public record serves as a very available official source for disclosure information. This information **must** be included in disclosure information because it is against the law to desecrate and/or destroy a historic graveyard and also because the presence of the site could affect the price of the property. Suggested from a surveyor is the idea that in the case of a subdivision, this would be a great opportunity to plan to insure access to the site. We know there are clauses in many deeds referring to the existence and preservation of historic graveyards. If title companies would expand the search chain for the sites, particularly the ones without visible surface evidence, we could expand the research base.

Only about half of the suggested 300 historic sites still have visible surface evidence. The sites with no visible evidence are usually the ones threatened by development. Likely with more exposure additional sites will be reported and can be surveyed and researched. Many of the sites of these historic graveyards are located on farmland. Since much of the farmland is being developed, it has become immediately pressing that all graveyards be honored and preserved before further loss. Growth and graveyard preservation can be mutually accommodated. Our association will work with governing agencies and the land management companies to help get plan approval and to prevent breaking the law and causing a "site" to be desecrated or *lost*.

Our association is not an enforcement agency. We have been researching the relative laws and case records and consulting with the District Attorney of Berks County and the Pennsylvania Historical and Museum Commission whose mission statement is the Commonwealth's memory, telling Pennsylvania's story, safeguarding the tangible remains of our past, and serving present and future generations as the state's official history agency.

Berks County graveyards are a unique historic resource that is a part of our early heritage and culture. Please join with us and share in the pride of preservation.

## ANNUAL MEETING - HIGHLIGHTS OF THE EXETER AUTO TOUR

**The annual meeting of the Berks County Association for Graveyard Preservation will be held Tuesday, March 10, 1998, 7 P.M. at the Lorane Elementary School Cafeteria on Rittenhouse Drive, Exeter Township. Officers will be elected.**

**The public is cordially invited.**

This Fall Exeter Township high school students helped with the Exeter Historic Auto Tour sponsored by the Exeter Township Historical Commission and the Berks County Association for Graveyard Preservation. Some students served as site assistants, and others documented the history of the site. Slides were made from their photographs and will be featured at this annual meeting along with site comments and narrations by the students, owners and adult presenters.

Sites included in the 1997 tour were: \*the Mordecai Lincoln Homestead and the Lincoln graveyard, \*Boonecroft, \*the Schneider Mill, the Friends Meeting House, the Jacksonwald One-Room School House, the Ritter #1 (later Brenciser) home and graveyard, the Messerschmidt Home and Graveyard, Grist Mill operations, the dinosaur fossil site and \*the Bishop Homestead. \*designate sites on the National Historic Register

The Exeter Township School District and the Berks County Association for Graveyard Preservation, specifically Stephanie Brightbill, Jacksonwald Principal, and Jacqueline B. Nein, Executive Director, are working together to build a database of local history to be used in the schools and the community. This program will be video recorded by Stephanie.

Many individuals expressed concern that they could not go on the tour last fall. This is another opportunity to enjoy some of the experiences of this historic tour. The public is most welcome. Senior, senior citizens have rich and precious contributions to add to this database of Exeter's history. A special invitation is extended to this generation to come and to share Exeter history with us. Other special guests include the owners and site presenters as well as their student assistants and their families.



**ONE-ROOM SCHOOL HOUSE**



**MESSERSCHMIDT STONE**

### **The Great Creek in Exeter Township - Hypothesis**

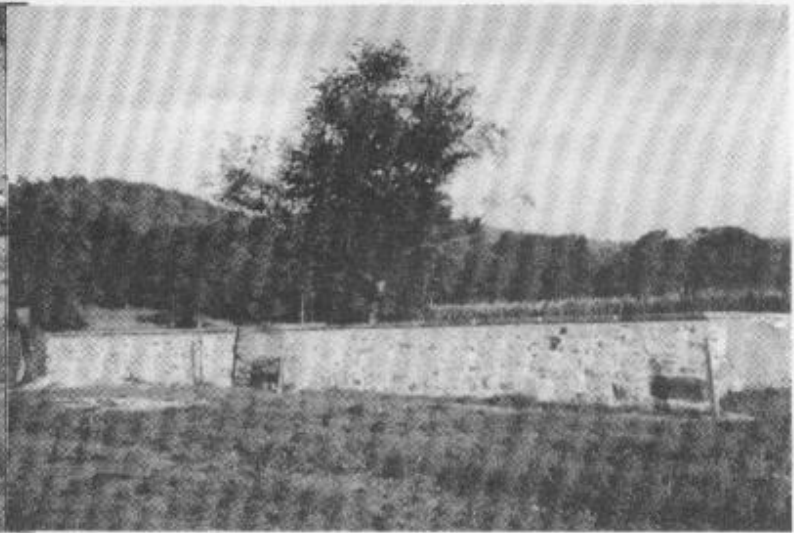
**by Jacqueline B. Nein, September 1997**

Early population pockets were reported along the Great Creek, the earliest being the Messerschmidt mill. This site was situated along Shelbourne near the Grist Mill Development. As early as 1737 a road was to be constructed "from the Widow Messerschmidt's mill to the Widow Lincoln's mill." As early as 1758, Abraham Lincoln ran a sawmill by a race which came off the Great Creek near present Route 422. A 1769 record mentions the race is already in existence and in operation for irrigation purposes. At one point the irrigation system was shared by Abraham and Mordecai Lincoln, Jacob Bechtel and Michael Seister. The John Bishop mill was erected very close to present Route 422 between the Messerschmidt (by now Bechtel) mill and the Lincoln Bros./Neukirk saw mill. Transportation was very important to mill business and Route 422 was improved and expanded, and Shelbourne Road was extended from the Bechtel mill to Jacksonwald. This mill activity and the Johannes Hartman activity on the Great Creek near the present Mt. Penn/Pennside line was reported by 1775.

In the process of evaluation of early historic Exeter graveyards associated with mills along this creek we have found that these mill graveyards contained many more burials than a few families would have. We know that at the Messerschmidt site the entire back and front yards contained burials and at the Lincoln mill the site continues for more than a block. The Bishop site contains over 100 burials. The Custard site near Butterlane contains many burials. When we expand to mill sites in other townships the pattern repeats itself. The conclusion is that these very early graveyard sites may have started as family plots but quickly expanded into community cemeteries. Many more mill sites need evaluation. Research continues.



**SCHAEFFER SITE-RICHMOND**



**HERBEIN SITE-OLEY**

## **PROGRESS REPORT**

### **Adoption and Repairs**

We now have evidence that supports 270 known historic graveyards in Berks County. Of the 150 with visible surface evidence 143 (95%) have been adopted or are being maintained since our incorporation in 1993. The rest have been located through bits and pieces of research and many already confirmed to have a divining pattern of that of a cemetery. By the end of 1998 we anticipate that only seven sites will need major masonry repairs.

#### **1997 Projects Under Way and/or Completed:**

- A Revolutionary marker was received from the Department of Veterans Affairs for service in the Continental Line for Johannes Messersmith, August 1, 1745-August 9, 1777. This marker will be placed at the newly dedicated Messersmith historic graveyard next to the old stones for Johannes and his father Stephan.
- The walls of the Williams site in Maiden creek were rebuilt and a gate was added.
- The walls of the Schaeffer site in Richmond Township were rebuilt and pointed after the cement veneer was removed. Financing was done by Schaeffer descendants.
- We again participated in the United Way "Youth Day of Caring" last spring. Approximately 175 students were involved in our sessions. They included students from Blue Mountain Academy, the Reading/Muhlenberg Vo-Tec, Wilson, Fleetwood, Oley, Kutztown, Brandywine and Holy Name High Schools. The service of these students is invaluable and we look forward to their participation again on May 13, 1998.
- The front wall of the Herbein site in Oley was prepared for masonry repairs by the FFA of Oley under the supervision of Betty Bortz. The front wall was rebuilt and pointed instead of covered with cement. The cap was replaced and other walls were repaired.
- Half of the masonry repairs at St. Henry's or the Reichert/Dum in Richmond Township were completed. Groups involved included Holy Name students and the Community Service crew. Financing is still needed. A surplus of stones is impeding progress. A volunteer group is needed to load the extra stones into a township truck.
- Student groups prepared other county sites for masonry work and evaluated sites for size, buried stones and number of graves.
- The Rickenbach site in Ontelaunee Township was surveyed and cleaned. Stones need to be moved to build a dry wall.
- A split rail fence will be erected around the Kutz site in Maxatawny and all stones reset.
- The fencing around the Gechr site in Maxatawny will be secured and painted.
- Descendants pointed the walls of the Spohn site in Greenwich Township. Tombstones still need to be reset.
- The Shollenberger site in Greenwich Township was rediscovered by dowsing areas on the Tim Bock property fitting the description passed down through generations. A monument with the family crest, financed by a descendant, has been erected on the property line recognizing the lives of the descendants of Frederick Shollenberger, who arrived in America in 1742.
- Our association was commissioned to find the Savage family graveyard in Rockland Township. Working with Wilber and Mary Savage the site was determined to be 150' wide and 50' long and with 98 occupied graves.
- Approximately 20 people participated in a dowsing workshop at the Herbein site in Oley Township.
- When explaining dowsing at our Exeter Auto Tour Peter Trumbauer, an Exeter Township High School tour assistant, discovered that the Lincoln historic graveyard was not limited to 10 Vanguard Drive. Actually the burial pattern stopped because there was a lane in the original site. The pattern picked up again and continued through the front yards of all properties on the west side of Lincoln, right up to the northwest corner of Littlefield. Stray tombstones were reported along the western boundary of the



**WILLIAMS SITE-MAIDENCREEK**



**MESSERSCHMIDT SITE-EXETER**

Corporate Center property.

•Office manager of the Senior Citizens Centers (Meals on Wheels), Jolyn Carr, has contacted us for the possibility of their members helping us with local graveyard preservation projects. This office works closely with school districts in their serving areas. As a start the Hamburg and Birdsboro centers have adopted a local site. They also plan to try having school students interview the citizens that they serve to add to the database of local history.

### **1998 Major Masonry Projects Estimated at \$36,000**

These projects will partially be financed through Exeter, Oley and Maxatawny Community Block Grants totaling \$13,000. The Schneider is financed through the donation of a descendant. Our association has been working very hard to provide additional funding for these major projects but more financing is needed from business and descendant donations. See financial report.

- Complete a thorough cleanup of the Schneider site (102' x 114') at Limekiln. Pack more ground around the west wall and begin masonry repairs to the wall and the cap.
- The footers and the wall at the Ritter #2 site (47' x 47') on Ritter Lane need to be rebuilt.
- The Bertolet #3 site (44' x 63') on Foxglove Lane will have minor wall repairs before leveling and capping the top surface. This site is classic and beautiful to behold, most especially in the spring with the mayflower ground cover.
- The Herman/Sassaman site (58' x 58') in Maxatawny Township already has new footers, and wall construction will be completed this summer. If money is available other repairs will be made at the Levan or the Kemp sites.
- The stone wall at St. Henry's (100' x 100') in Richmond Township will be completed.

A permanent display is continually updated on the second floor connecting corridor of the Berks County Court House and the Services Center. Additional pamphlets are available there.



**RITTER SITE-EXETER**



**BERTOLET #3 SITE-OLEY**

**BERKS COUNTY ASSOCIATION FOR GRAVEYARD PRESERVATION  
BUDGETED AND ACTUAL STATEMENTS OF CASH RECEIPTS AND CASH DISBURSEMENTS  
YEARS ENDED DECEMBER 31, 1998 AND 1997**

	BUDGET 1998	ACTUAL 1997	BUDGET 1997
BEGINNING CASH BALANCE - JANUARY 1	\$31,214.50	\$19,961.77	\$19,961.77
<b>CASH RECEIPTS:</b>			
INDIVIDUAL CONTRIBUTIONS AND DUES	14,000.00	7,972.00	11,500.00
CORPORATE CONTRIBUTIONS AND DUES	7,000.00	7,019.06	6,000.00
FUNDRAISING/OTHER	5,000.00	7,174.10	6,500.00
GRANTS	13,000.00	0.00	0.00
INTEREST INCOME	1,000.00	961.31	450.00
<b>TOTAL CASH RECEIPTS</b>	<b>40,000.00</b>	<b>23,126.47</b>	<b>24,450.00</b>
<b>CASH DISBURSEMENTS:</b>			
<b>ADMINISTRATIVE:</b>			
COPIES	50.00	72.71	125.00
FINANCIAL	200.00	136.60	175.00
MILEAGE	200.00	60.00	125.00
PHOTOGRAPHY	300.00	113.69	100.00
POSTAGE	350.00	185.00	175.00
STATIONERY	100.00	0.00	50.00
SUPPLIES	500.00	245.46	200.00
TELEPHONE	300.00	150.43	300.00
MISCELLANEOUS	600.00	397.83	350.00
<b>SUB-TOTAL ADMINISTRATION</b>	<b>2,600.00</b>	<b>1,361.72</b>	<b>1,600.00</b>
HISTORIAN	50.00	0.00	50.00
FINANCE/FUND RAISING	1,000.00	1,941.48	1,300.00
LEGAL/MUNICIPAL	50.00	15.00	50.00
<b>MAINTENANCE:</b>			
POSTAGE	10.00	0.00	10.00
COPIES	10.00	0.00	10.00
SUPPLIES	25.00	0.00	25.00
<b>SUB-TOTAL MAINTENANCE</b>	<b>45.00</b>	<b>0.00</b>	<b>45.00</b>
MEMBERSHIP	50.00	0.00	50.00
SOCIAL	50.00	56.26	50.00
PRESERVATION	36,000.00	7,996.10	17,000.00
<b>PUBLICATIONS:</b>			
BROCHURES	100.00	42.40	100.00
ANNUAL REPORT	650.00	303.37	650.00
POSTAGE	250.00	135.41	250.00
<b>SUB-TOTAL PUBLICATIONS</b>	<b>1,000.00</b>	<b>481.18</b>	<b>1,000.00</b>
PUBLIC RELATIONS	100.00	20.00	100.00
RESEARCH	150.00	0.00	100.00
<b>TOTAL CASH DISBURSEMENTS</b>	<b>41,095.00</b>	<b>11,873.74</b>	<b>21,345.00</b>
CASH BALANCE - DECEMBER 31	<b>\$30,119.50</b>	<b>\$31,214.50</b>	<b>\$23,066.77</b>

Our financial report for 1998 is most impressive. We are thankful to many of you for your financial support, your donations in services and raw materials and your interest and concern. Please continue to provide this support. Community grant funds must be used in 1998 but are not adequate to completely finance any site. You will notice in the 1998 budget the amount designated for preservation is usually high. Our philosophy is not to accumulate money for maintenance purposes until major masonry needs are met. Please review this newsletter and all our accomplishments that have been made in 1997 and what is planned for 1998. Contributions and new members are needed to continue with the masonry phase of other projects and to expand our preservation efforts. Our organization has only existed for four years but we have accomplished much through the help of people like you. It takes a lot of time, effort and money to accomplish all our goals of preserving our heritage for the future generations of Berks County. Please help us make 1998 a banner year.

- The Berks County Association for Graveyard Preservation is duly registered as a charitable organization with the Department of State, Commonwealth of Pennsylvania. A copy of the official registration and financial information may be obtained from the Pennsylvania Department of State by calling toll free, within Pennsylvania, 1-800-732-0999. Registration does not imply endorsement.

- The Berks County Association for Graveyard Preservation is also recognized by the Internal Revenue Service as a nonprofit organization under section 501(c)(3) of the Internal Revenue Code.

**OFFICER NOMINEES FOR 1998**

**Executive Director: Jacqueline B. Nein**, incumbent, is a graduate of Reading High, West Chester State and Temple University. She is a retired teacher, department chairperson and coach. She was the first woman to receive the "Best Coach of the Year Award" from the Greater Pottstown Area Oldtimers. In 1995 she was honored by the Mahanatawny Chapter of the D.A.R. organizing community efforts to preserve historic graveyards. Jackie is a charter member of the BCGS and compiled and published the church records of First Reformed, Reading; Trinity Lutheran, Reading; and Schwarzwald Reformed. She initiated efforts to organize "9" and Dunkelberger family associations and as historian wrote both family genealogies. She helped restore the historic family graveyard in Oley Township, near Limekiln. She is the Judge of Elections for Exeter Township, Precinct 3, Berks County, PA and a member of St. Andrew's U.C.C.

**Assistant Executive Director: Dorothea (Dottie) Lee Schaeffer**, born in Monroe and raised in Reidsville, NC, Dottie is a graduate of the University of NC and taught at Cedar Crest from 1957-1960. Dottie has lived in PA for 40 years and is married to Judge Forrest Grim Schaeffer, Jr. They are the parents of 5 children, 3 sons and 2 daughters and 7 grandchildren. Semi-retired as the owner and president of the Lee Agency, Inc. Realtors, Dottie now has time for genealogy and graveyard preservation. She is a member of St. John's UCC, Kutztown and is presently a board member for Saucony Cross, Inc., Retirement Home in Kutztown.

**Treasurer: Kerry L. Dietrich**, incumbent treasurer, is a native of Kutztown and holds a B.S. in Business Administration from Kutztown University and an M.B.A. from Lehigh University. In addition, Kerry also completed

graduate courses at Tübingen University in southern Germany. Also a CPA, CMA and Notary Public, Kerry has completed four years in public accounting, served eight years as Finance Director and Secretary/Treasurer for a local manufacturer and worked in Heidelberg, Germany in the financial consolidation department for a large international construction materials producer. He is currently Administrator-Treasurer for Lehigh Portland Cement Company in Allentown.

**Recording Secretary: Sandra Ruppert**, served as secretary of the BCAGP previously and has been secretary of the annual Ruppert Reunion for the past ten years. She and her husband Barry attended a BCAGP workshop and met the owner of the property where the Ruppert graveyard was located and learned that the graveyard was in need of cleanup and maintenance. With the help of the Dryville Church Boy Scouts the graveyard including the stone wall was returned to a state of dignity, a very fitting tribute to these early Ruppert ancestors. Barry discovered that the brother of his great-grandfather was buried there. Just recently they discovered that the site was not limited to the stone wall and actually extended up the hill and contains many more graves. Sandra has been involved in updating her family history. She serves as the Berks County Assistant Director of Election Services.

**Corresponding Secretary: Sandra Louisa (Dierolf) Kunkle**, born January 17, 1946 in Reading, Sandra was raised on the Edmund Shearer estate in Tuckerton. This had a great influence on her life and interests in art, music, history, antiques and now graveyards and their preservation. Sandy has a deep respect for the elderly and their stories of the past. Sandra is a mother and a grandmother.

## CITY OF READING

**These sites will be under the direction of our new board member, Jonathan K. Del Collo, assistant to the Mayor. Research continues on these Reading sites. For more information see the 250th anniversary history of the City of Reading by Kathy M. Scogna to be released in May 1998.**

**BERNHART ADAM** Southwest corner of Old Wyomissing Rd. and Parkside Drive South, near Holy Name. Situated approximately 100 yards from street, in grove of trees at end of grass driveway leading uphill from house. The site is 123' x 125'. History: The burial plot and access easement was excepted from a deed when Rachel Adam Schwartz' husband acquired the land from the executor of the Bernhard Adam's estate in April 1851. "The history of this site is a mixture of fact, hearsay, legend, record and recollection. Earliest tangible traces are a tombstone dated 1754, remains of a schoolhouse, fitted during the colonial period, and a record of transfer of deed in 1798." [abstracted from article by Amy Styer, Historical Review of B.C., Spring, 1980] The 1998 evaluation indicates there are approximately 185 persons burials. Plot is well-kept with stones set in cement because of heavy vandalism. Two trusts exist: the William Heckler and the Fred M. Evans. There are at least 100 markers including the Schwartz. Because of recent burials this site does not qualify as historic according to the definition of the State of PA, but the early burials should qualify this site for special consideration.

Observations: When the stones were reset into cement it appears that some were not placed at a grave and some were placed where there is no grave. Records are available to cross-check. (see picture on back page)

**GERBER/BITTING/FIX** East of Rt. 10 one block south of Lancaster Ave. between the Schuylkill Greenway Trail and the 422 W. Shore Bypass. The part with visible surface evidence is approximately 50' x 150'. Gerber is Amish. In an 1897 Reading paper it states that the Garber site has 200 burials. Supposedly the Pennsylvania Railroad came to Reading in 1884 and took a strip from the western side and paid to have the bodies removed from the track and bank area. (Where were the bodies moved to? Isn't it interesting to know that in 1997 dowsing activity is still generated from the burials that supposedly were removed?) In 1963, the state launched the second grab for construction of the West Shore Bypass on part of the cemetery. In the process of this construction the land on the eastern side next to the Bypass was given an extreme grade and consequently the entire stone wall is in danger of collapse. Trust was provided by Samuel (1895) & Franklin (1929) Fix. Unique brick building remains in corner; unusual twin arch construction under roof; said to have stored black gunpowder in 1880. There are 48 inscribed stones.

Observations: The story that the entire area was covered with graves seems to be true. In addition to the site described as the Fix/Gerber site, dowsing show indications of approximately 50 full graves along the railroad bed beginning across the street from the corner of Fern, Bartlett and Route 10. and continuing down the rail bed to the blue/green evergreen tree across Rt. 10 near the alley next to Queen City Diner at the corner of Rt. 10 and Lancaster Avenue or Rt. 222. Across the street from Berkshire Insulation dowsing was begun from before the railroad bed and into the center of the street. Five rows of patterns became apparent. The row closest to the bypass runs side-by-side. The other four rows are head to foot patterns. This is the best point to dowse since this is the area that was least disturbed with the road construction of Rt. 10. Proceeding toward Rt. 222 the road was cut into the hill, probably lower than grave depth. Proceeding up from Berkshire Insulation positive readings might result but the traffic

pattern is not conducive to dowsing without the cooperation of active traffic control personnel. It would appear that this railroad bed and the road bank and road area is what was indicated in the 1897 Reading newspaper article about Reading cemeteries. At the Gerber/Bitting site there are only 3 burials beyond the metal post fencing. It appears that all the Gerber burials are on the railroad bed and outward and onto Route 10. For many years this site was cared for by John Fix. The site is now under the auspices of the BCAGP, and various community groups have taken turns at maintenance, more recently some Amish descendants and a boy scout troop from Temple. (See picture on back page)

**KISSINGER** Several generations of the Kissinger family were buried on farm located in triangle formed by confluence of Tulpehocken Creek and Schuylkill River. Site is located on City property at the very end of Blair Avenue in Glenside. Enter under the yellow pipes to the bike trail and follow the trail down the hill to the flat area on the left about 10' from the trail. The size of the site is approximately 165' almost north to south and 175' almost east to west and is affiliated with the canal, locks and mill. No gravemarkers were found. Observations: Terrain is difficult to assess because of the brush. Traveling up the path from the Schuylkill just a little beyond the first dip in the trail activity begins and continues across to the macadam trail in 14 rows. There are 18 rows adjacent to the walking trail west of the wooded trail coming up from the Schuylkill and continues for 9 more rows on the east side of this trail, making 27 rows in all. Burials are laying almost north to south.

**MESSMER** A small stone for an infant was found buried inscription up near the back yard of 334 Pine Street. The site does not cover the entire yard. Inscription: Messner s. of Hannah and Wayne April 14 b. April 25, 1899 lived 11 days. Observations: 2 rows of 2 graves each near the walk and the fence and 2 more graves side by side outside the fence lined up with the second burial from the walk inside the yard. On the second visit observations were not made in any of the back yards but the area behind the homes on the 300 block Pine, north of Carpenter was evaluated. Activity was discovered in the area behind the yard fences and continued and included the side walk on the north side of Riverfront Drive. Activity was found right near Carpenter Street and continued up to the 4th house from the corner of 4th and Pine. Supposedly the House of Good Shepherd at Fourth and Spruce had a cemetery affiliated with it.

**SCHWARTZ** This site was once located in the City of Reading but is now in West Reading. It formerly stood on Leinbach's Hill, just north of Penn Ave. overlooking Penn Street. Part of the hill was leveled in 1963 during the construction of the Route 422 Bypass. Cemetery removed to Bernhard Adam Cemetery (probably just those with stones). Five burial records are included in Leinbach's Funeral Records. The site evaluation is not complete. Observations: If the site did get disturbed when the Bypass was put in then the site must have been enormous. From the looks of the terrain the site more likely was disturbed in 1884 when the Schuylkill Division of the Reading Railroad was put in. The site has not yet been fully evaluated but it appears that a burial pattern exists on the north side of Reading Avenue toward the passage made by the railroad and continues west into the yard of 229 Reading Avenue. Evaluation to continue.



## ENDOWMENT OPTION

You can endow an historic graveyard with our association by investing the principal and designating our group as the custodian of your site. We would bill the custodian of your trust and the interest would be used for maintenance and/or to have floral deliveries. A minimal custodial charge will be made by the association. We can not accept an endowment fund until all needed masonry repairs are made.

Carrie Knabb has notified the Berks County Association for Graveyard Preservation that she wants to finance the wall repairs and the preservation and maintenance of the Schneider historic graveyard at Limekiln, Oley Township. The Snyder graveyard is the largest historic graveyard in Berks with visible surface evidence and has a stone for Johannes Shneider (*sic*), Dec. 1687-July 19, 1743, the oldest stone in Oley Township and one of the oldest in Berks County. There are 7 veterans of the Revolution and 2 veterans of the War of 1812 buried on this site. The restoration will begin this spring and be completed in the spring of 1999. Carrie also has told us that she will provide a trust in her will for continued maintenance and repairs to be arranged by our association. Our Oley advisor Ralph Lorah will be coordinating the masonry work of Nat Fetter with the owners Jane and Charles Hetrick and will be arranging for landscaping and maintenance.

Carrie (Snyder) Knabb is well known for her love of and skill at quilting and gave many quilting demonstrations at the Kutztown folk festivals. Carrie managed the quilting of the 250th anniversary quilt for Oley Township. She and her husband, now deceased, had the grocery store and operated the post office at Limekiln in the Lodge Building. Carrie is the daughter of Grover and Elizabeth (Feick) Snyder.

We are very thankful to Carrie for this generous donation and hope more descendants will like the idea and provide for other sites.

## DIVINING RODS

Over centuries divining rods have been used to find underground sources of water. This too is part of our culture. Recently we learned that divining rod activity could also detect disturbances in the soil structure caused by many types of buried items, including building foundations and graves. Some of our members have been very successful using this technique to locate and survey "lost" graveyards.

### NEGLECTED HISTORIC GRAVEYARDS WHICH ARE NOT YET ADOPTED

Ontelaunee Township: Rickenbach  
Perry Township: Greth  
Exeter Township: Hechler/Esterly  
Oley Township: Guldin, Weidner #1  
Richmond Township: Reichert/Dum

### MAJOR MASONRY PROJECTS - FINANCES NEEDED

Oley Township: Peters, deTurck  
Cumru Township: High/Hoch  
Exeter Township: Kline/Close  
Maxatawny Township: Kemp, Levan  
Ontelaunee Township: Rickenbach

General meetings are held the second Tuesday during the months of March, May, September and November at the Lorane Elementary School Cafeteria, Rittenhouse Road in Exeter Township at 7 P.M. The September general meeting scheduled for Tuesday, September 8 has been canceled due to the holiday falling on September 7.

### 1862 ATLAS AND INDEX AVAILABLE

A new edition of the 1862 Berks County land owners Atlas is available with an index for a donation of \$35. The atlas has a soft 9 X 12 cover and 80 pages reprinted in 1988 by Javon Co. from actual surveys by L. Fagen; originally published by H. F. Bridgens. The index contains over 7,000 names of land owners. Township maps are scaled and names clearly legible. Add \$2 for P. & H. or arrange for pick up. Call 610 779-3464.

Meiser's Historical Site Map of Reading & Berks, 1976, 2' x 3' double sided...900 historic sites in city and county. \$5 \$1.50 P. & H. (free with other mailing purchase)

## MEMBERSHIP & DONATION FORM

NAME \_\_\_\_\_

ADDRESS AND PHONE \_\_\_\_\_

\_\_\_\_\_ \$15 Annual individual membership; \$35 Annual Business membership

\_\_\_\_\_ Donation of \$ \_\_\_\_\_ to the association general fund

\_\_\_\_\_ Donation of \$ \_\_\_\_\_ to be used for the \_\_\_\_\_ graveyard

\_\_\_\_\_ Atlas and/or Map \_\_\_\_\_ includes postage

Make checks payable to: B.C.A.G.P. - 4701 St. George Street, Reading, PA 19606





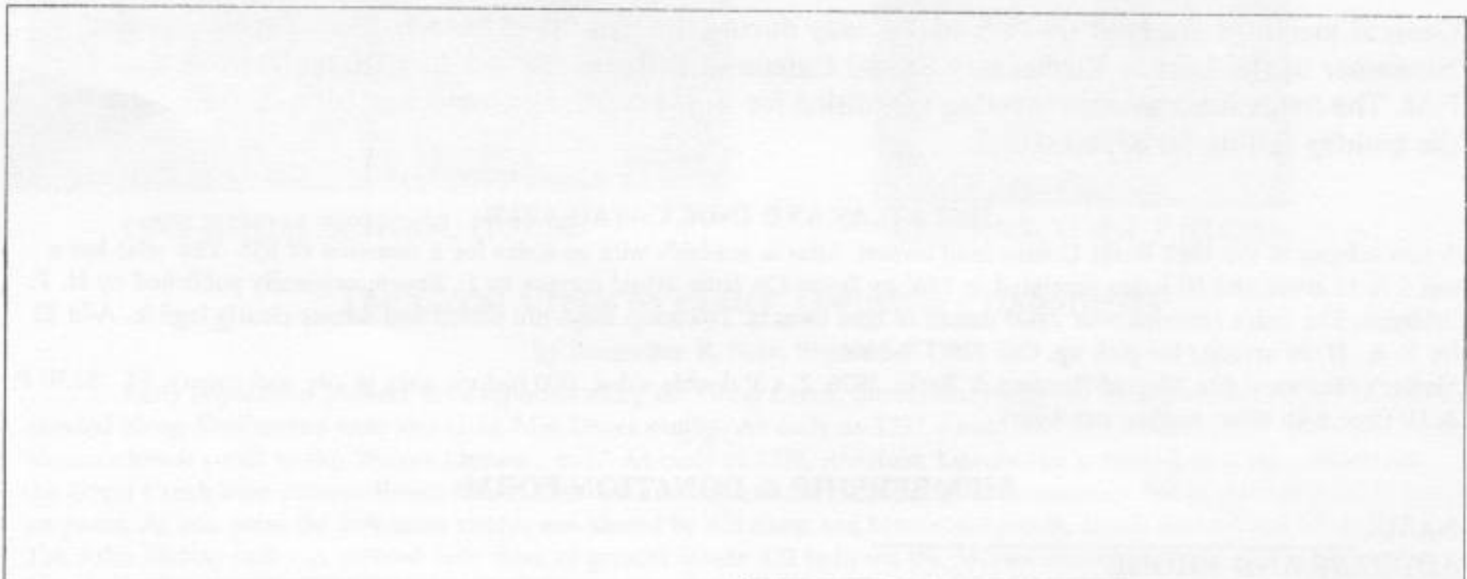
**BERNHART ADAM SITE**

**CITY OF READING  
Executive Committee 1998**

**GERBER/BITTING/FIX SITE**

Jacqueline B. Nein: Executive Director  
 Dorothea Schaeffer: Assist. Executive Director  
 Kerry Dietrich: Treasurer  
 Sandra Ruppert: Recording Secretary  
 Sandra Kunkle: Corresponding Secretary  
 Joan Texter: Site Evaluation & Mapping  
 Nelson Farr: Preservation  
 Cynthia Jimenez: Membership  
 Kathy Scogna: Public Relations  
 Hilda Fisher: Oley Advisor

Ralph Lorah: Oley Valley Advisor  
 Jeremiah Deysher: Oley Valley Advisor  
 Carl Zettlemyer: Maxatawny Advisor  
 Grace Henninger: Greenwich & Albany Advisor  
 Jonathan K. Del Collo: City of Reading Advisor  
 Michael Boland: Catholic Liason  
 Scott Taylor: Exeter Advisor  
 Harlan Snyder: Boyertown Area Advisor  
 Mark Kirn: Alsace Advisor  
 Barb & Charles Nissley: L. of Absence mission work



BERKS COUNTY ASSOCIATION for GRAVEYARD PRESERVATION  
 4701 St. George Street, Reading, PA 19606

Non-Profit Org.  
 U.S. Postage  
 PAID  
 Reading, PA  
 Permit No. 694



**Gravestone**